

COMMUNITY PERSPECTIVES OF THE 220 KV MARSYANGDI CORRIDOR

The 110 km Marsyangdi Corridor is a 220 kV high voltage transmission line. It is being built through five districts of Nepal to transfer electricity from hydropower generation plants planned in and around the Annapurna Conservation Area to consumers of electricity in India and Kathmandu.

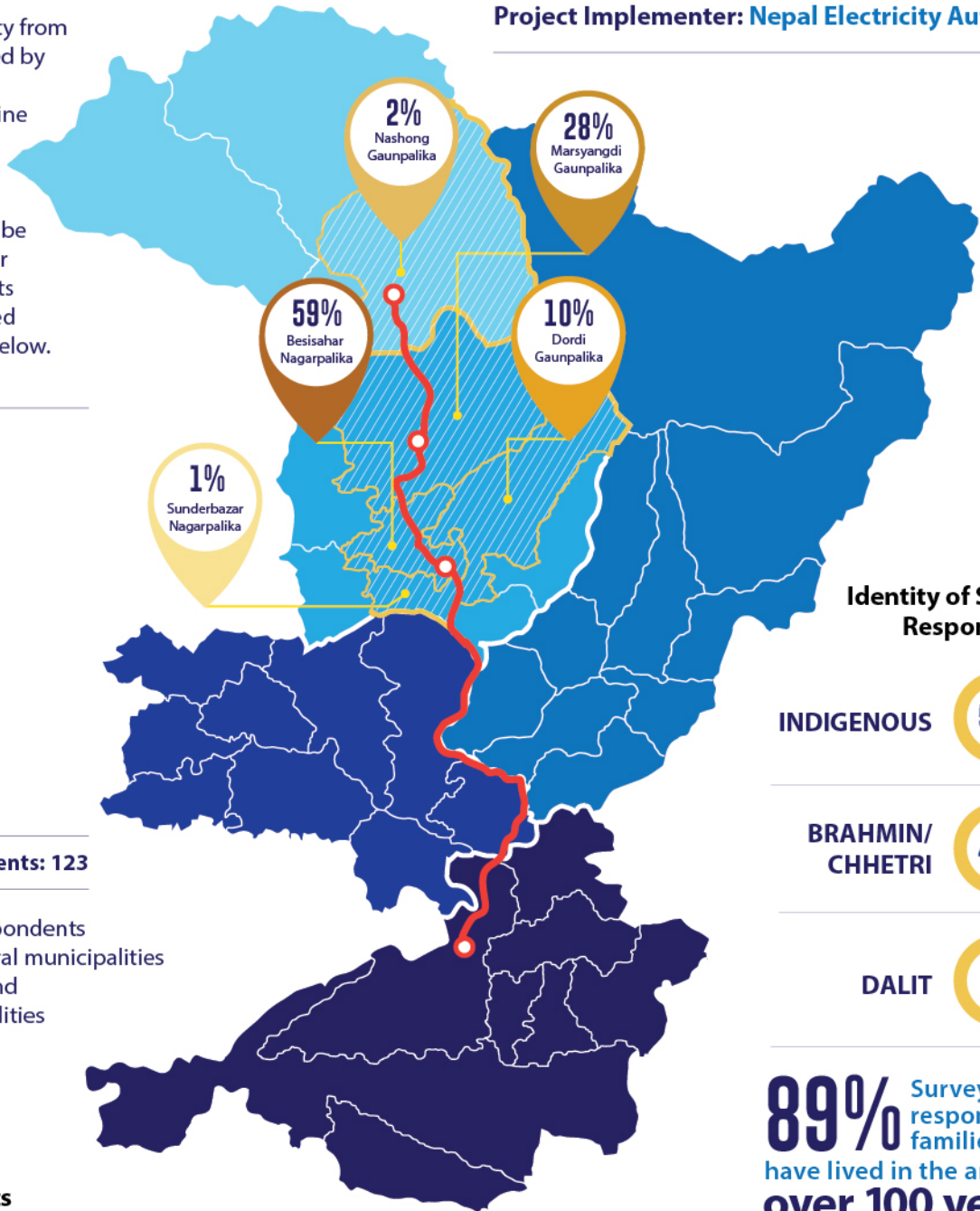
Key Funder: European Investment Bank

Loan Amount: €95 Million

Project Name: Nepal Power System Expansion Project

Project Implementer: Nepal Electricity Authority

A grassroots community from Lamjung, Nepal affected by the 220 kV Marsyangdi Corridor transmission line conducted a survey to better understand who among them are affected, how they will be affected, and what their concerns are. The results from the community-led survey are presented below.



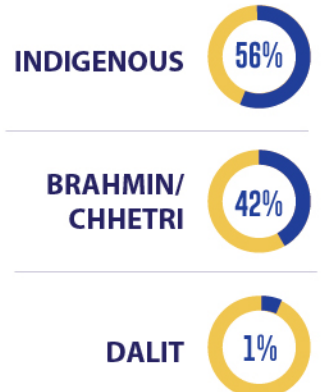
Affected Districts

- MANANG
- LAMJUNG
- GORKHA
- TANAHU
- CHITWAN

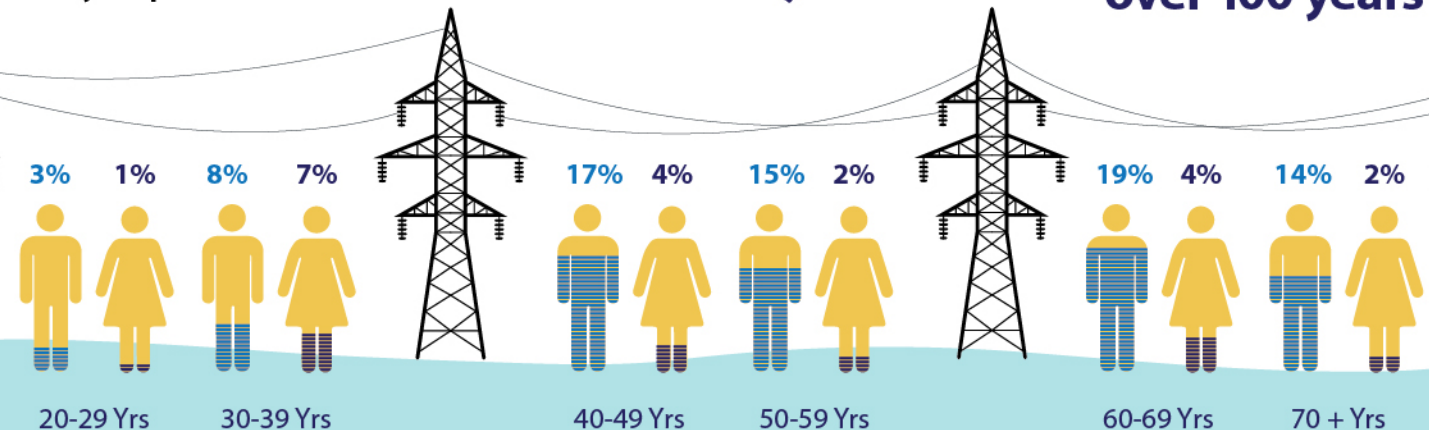
Total Survey Respondents: 123

% of survey respondents from specific rural municipalities (gaunpalikas) and urban municipalities (nagarpalikas)

Identity of Survey Respondents

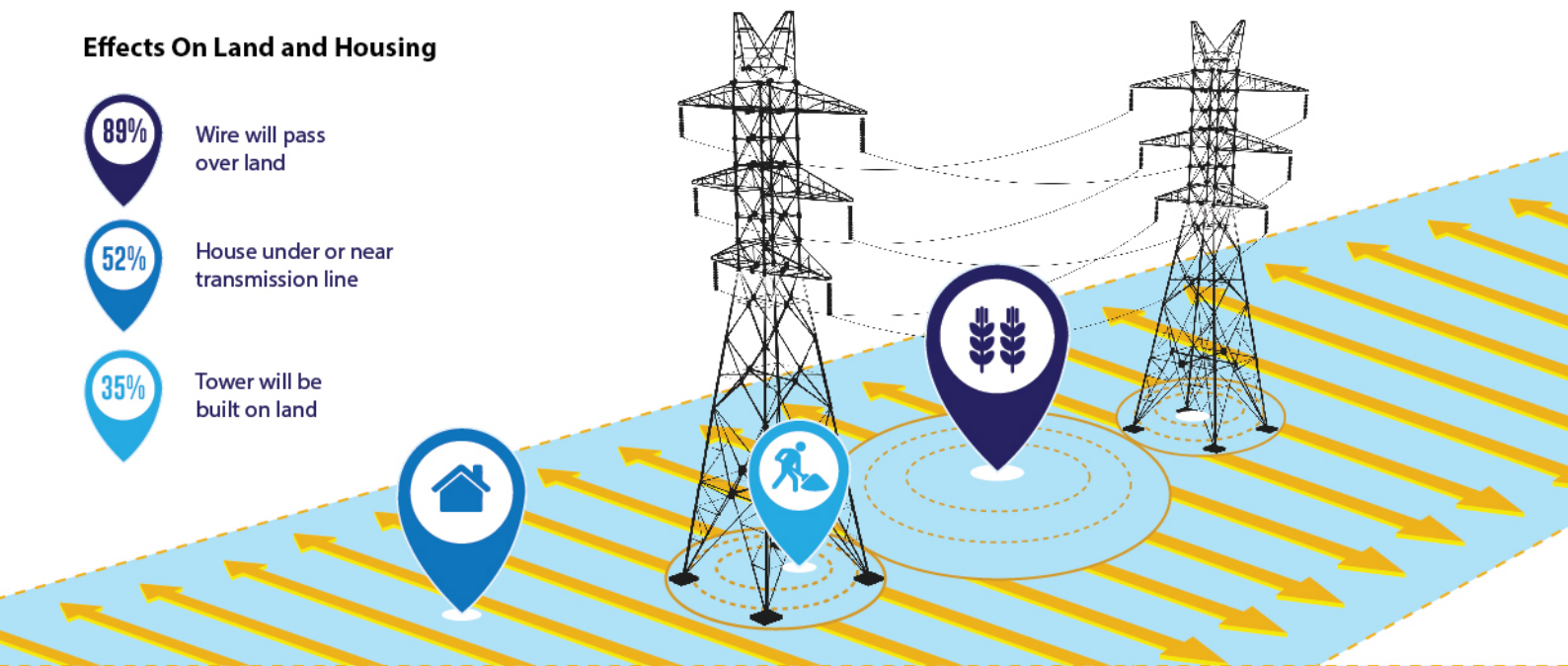
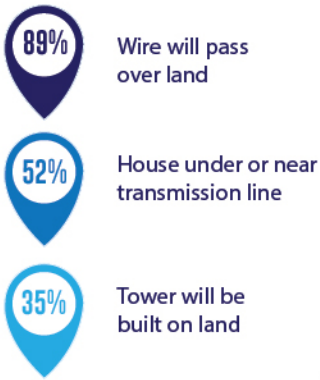


Age and Gender of Survey Respondents



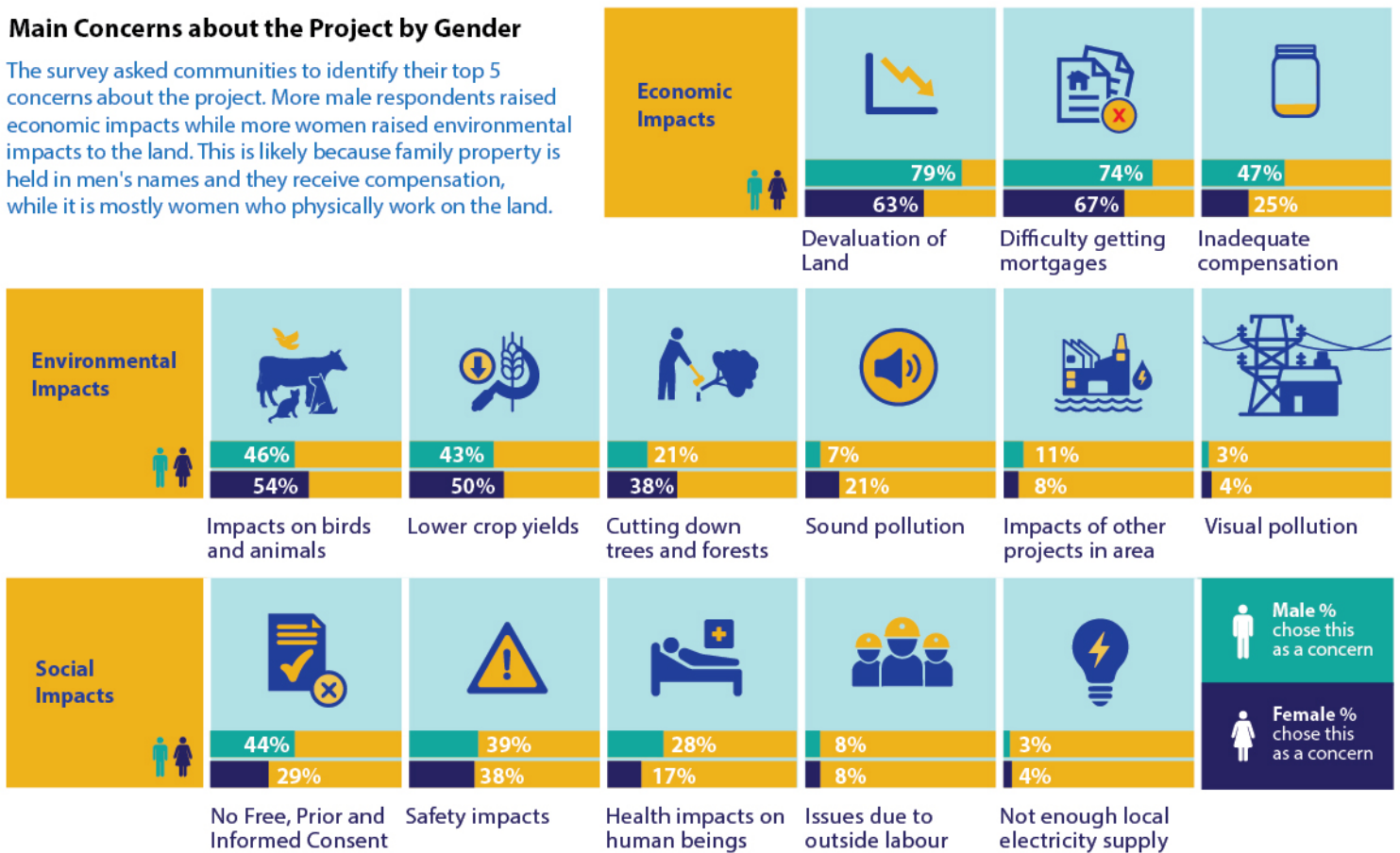
89% Survey respondents' families have lived in the area for over 100 years

Effects On Land and Housing



Main Concerns about the Project by Gender

The survey asked communities to identify their top 5 concerns about the project. More male respondents raised economic impacts while more women raised environmental impacts to the land. This is likely because family property is held in men's names and they receive compensation, while it is mostly women who physically work on the land.



How the Communities Learned about the Project



Communities are Impacted by Multiple Projects

76% respondents affected by the 220 kV Marsyangdi Corridor also reported being affected by hydropower generation projects or other power lines

51% respondents affected by the 220 kV Marsyangdi Corridor reported being affected by another high voltage transmission line